



COMEDY SERIES

RESIDENCY

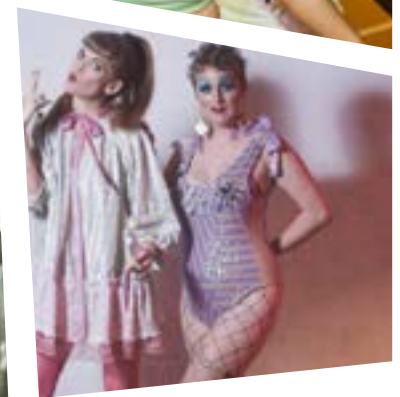
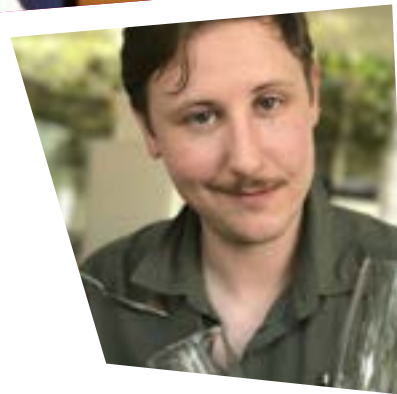


# TABLE OF CONTENTS



Wet Food - Erin Markey Live with Emily Bate - Photo by Brianne Bland

What is the <b>Spit Take</b> Comedy Series?	3
What is the <b>Spit Take</b> Residency?	4
What is our criteria for selecting artists for the <b>Spit Take</b> Residency?	5
How will <b>Spit Take</b> Residency artists be selected?	6
What's the timeline?	6
Let's partner up!	7
<b>Spit Take</b> Residency Application	8



# What is the Spit Take Comedy Series?

The Spit Take Comedy Series produces performances that push the boundaries of traditional stand-up and improv comedy to bring you experiences that are smart, intriguing, and always hilarious.

Past performers include Lorelei Ramirez, Jamie Loftus, Sarah Squirm, Story Pirates, Cocoon Central Dance Team, Johnny Pemberton, and Erin Markey.

Photos L-R: Lorelei Ramirez, Jamie Loftus and Sarah Squirm, Story Pirates, Cocoon Central Dance Team - Photo by Mike Dempsey, Johnny Pemberton, and Erin Markey - Photo by Sin Bozkurt



Cocoon Central Dance Team - Photo by Emma Freeman

## What is the **Spit Take** Residency?

The **Spit Take** Residency awards funds to comedy artists to support the development of new work. A residency award will be in the amount of \$2500 with an additional \$500 that can be used to reimburse expenses associated with the residency.

Residency artists will post updates to our website and social media on an ongoing basis to entertain our audience and inform them about the development of their work.



# What is our criteria for selecting artists for the **Spit Take** Residency?

We are purposefully limiting the criteria for selection and are seeking artist applications from a wide range of mediums. We are currently looking for **Minnesota-based** artists.

We ask that you are working on a **specific project** for this residency. This project could be in any medium, including (but not limited to) live performance, online performance, writing, or visual art.

The project should be **new work** for you as an artist and ideally represent growth or expansion of your prior work. That is, the artist should be trying something **new or innovative** with this project.

While the project does not have to fit in standard comedy genres such as stand-up, improv, or sketch, we require that the one of the goals of the project is to be funny.



A woman with dark hair, wearing a red jacket over a green top, is looking towards the camera. The background is a plain, light color.

# How will Spit Take Residency artists be selected?

**Spit Take** Series producers and partners will review applications on a rolling basis in light of the above criteria. In addition, we will consider the quality and content of an applicant's performance, writing, video, and social media history.

Christina Catherine Martinez - Photo by Christopher Richmond

## What's the timeline?

SUMMER 2021

Residency  
Artists selected

FALL 2021

Online  
Artist Updates

WINTER 2021

SPRING 2022

Residency  
Projects complete

Artists will be selected for the residency in Summer 2021. Artists will be expected to provide online updates (approximately 5 updates per artist) during the rest of 2021, into early 2022.

The projects resulting from the residency should be able to be completed between Winter 2021 and early 2022.



October 2018 Johnny Pemberton  
Moving Through Physical Space  
Photo by Emma Freeman Photography

# Let's partner up!

The **Spit Take** Series is grateful for the support of many organizations, individuals, and companies who partner with us. From being a participant, a colleague or organization who helps to shape the program and guide the artists, to helping to financially support the project, there are a variety of ways to engage with the Residency. If you would like more information on how to be a part of the Spit Take Series, please contact us at [contact@spittakeseries.com](mailto:contact@spittakeseries.com).

We are now a fiscally sponsored project of Springboard for the Arts! This means that you can make tax-deductible donations to **Spit Take** through Springboard that will support us. Click this button to donate:

**DONATE TO THE SPIT TAKE COMEDY SERIES**

partners



venue partners







# How to apply

To apply for the **Spit Take** Residency, please answer the following questions. You may answer the questions in any format you choose (for example written, video, audio recording). Be as brief or expansive as you would like.

- ◆ **What is your background in comedy performance or the arts in general?**
- ◆ **Please describe the project you would like to work on for this residency?**
- ◆ **How do you envision providing updates to our audiences on the project - medium, format, topic?**
- ◆ **What do you envision as the culmination of the project?**

Please email your applications to [contact@spittakeseries.com](mailto:contact@spittakeseries.com) by **July 12, 2021**. We will confirm receipt and inform applicants of final decision prior to July 27, 2021.

## **Spit Take** Comedy Series Values

The **Spit Take** Comedy Series seeks to do our part in creating safer and more diverse spaces for comedy performance. We seek to support artists and voices that have traditionally been underrepresented in comedy performance. To learn more please see our equity statement [here](#).

## **Questions**

Please direct any questions about the residency to [contact@spittakeseries.com](mailto:contact@spittakeseries.com)

The MN Residency program will award funding to two artists or groups. At least one artist or group will be selected through this application process. Depending on the number and quality of applications, additional artists may be selected through an alternative process. While artists applying must be Minnesota-based, up to one artist living outside of Minnesota may be selected.